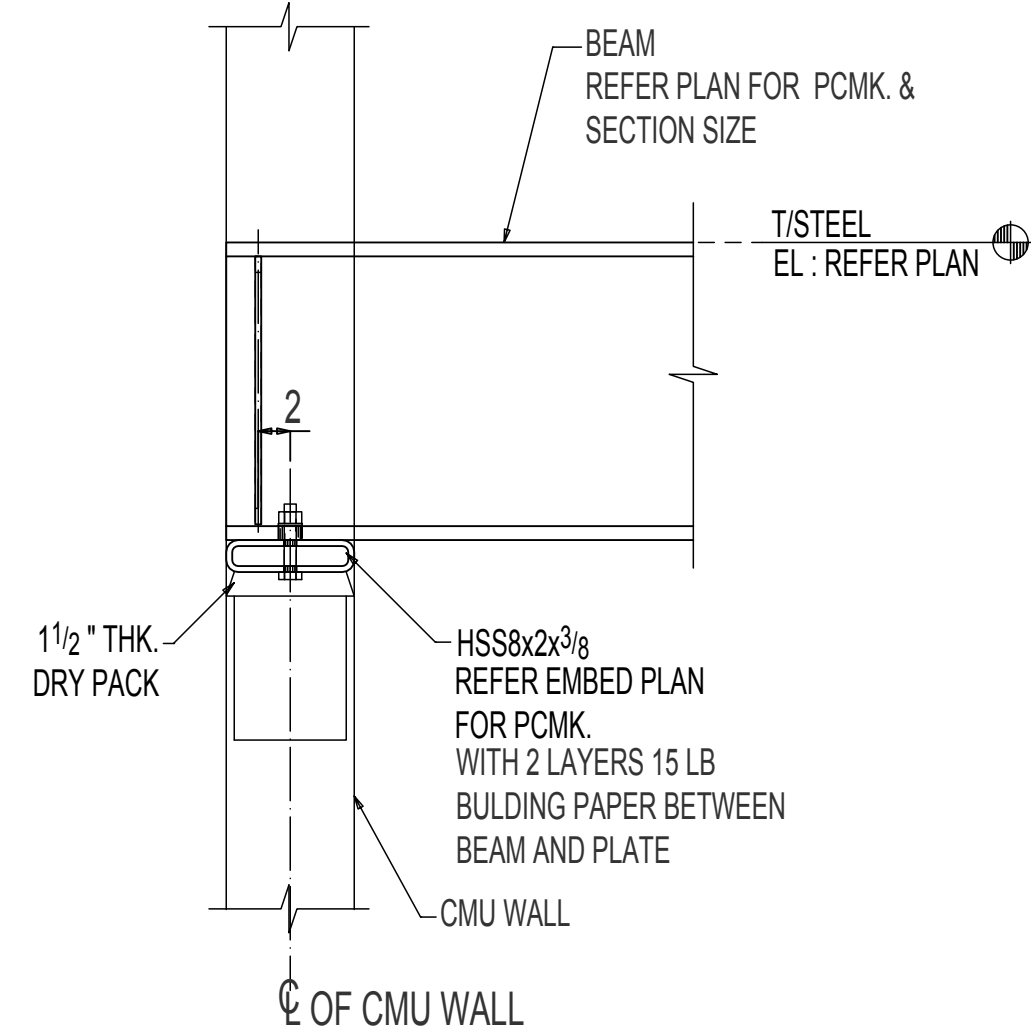
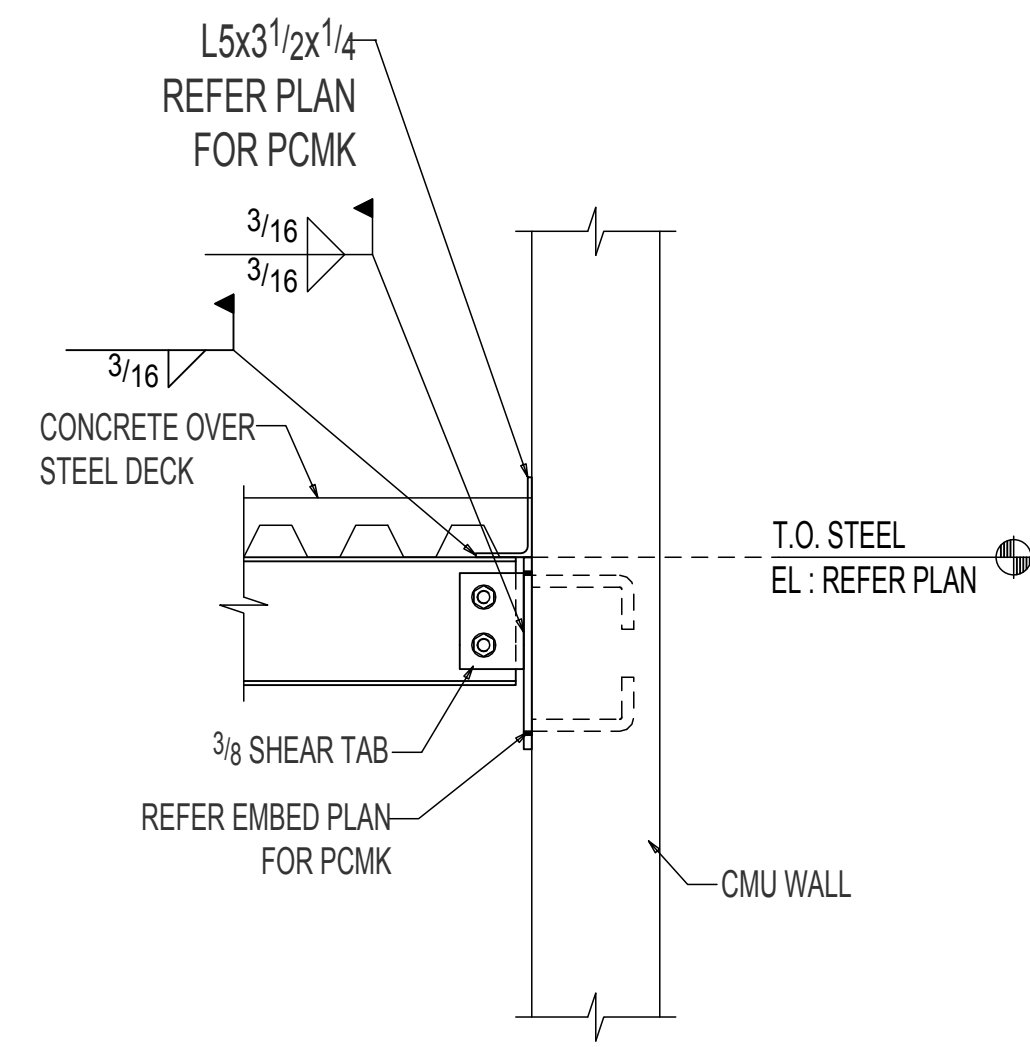


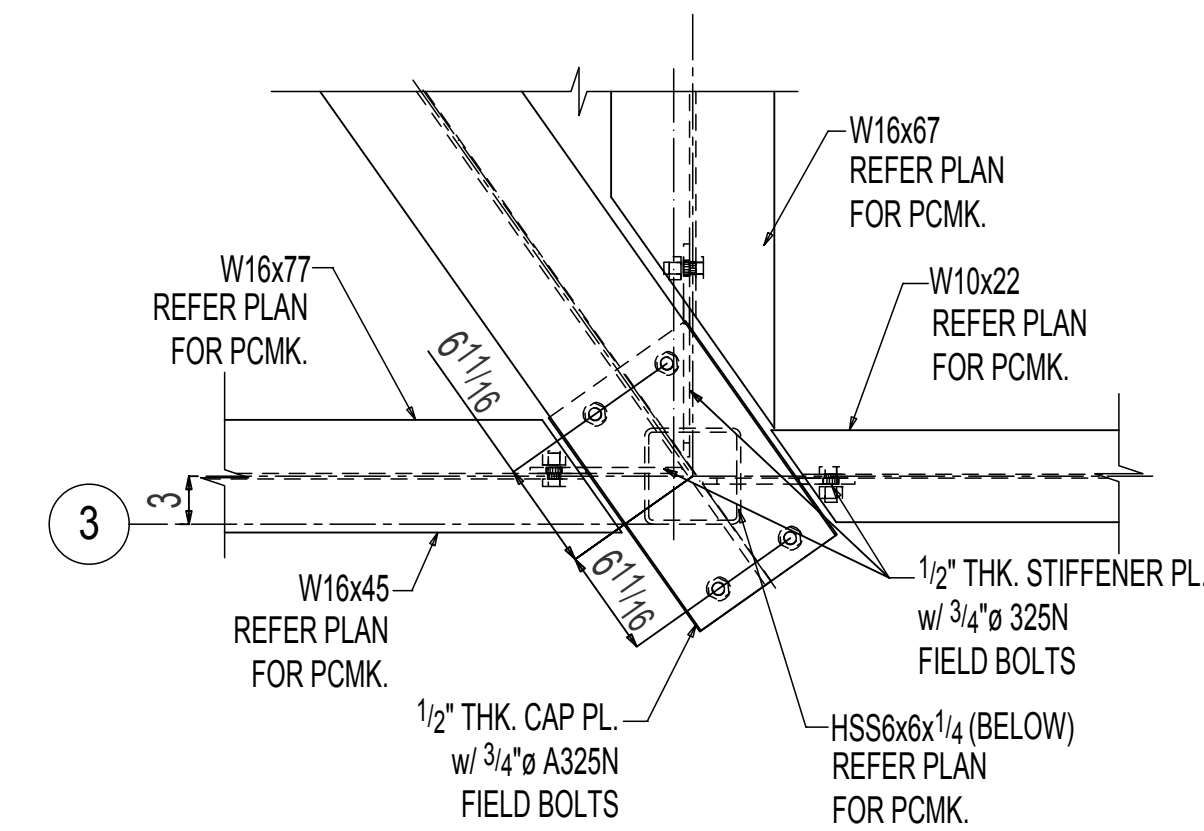
**1 SECTION VIEW**  
**E211** (REF DWG NO : 208/S7.1)



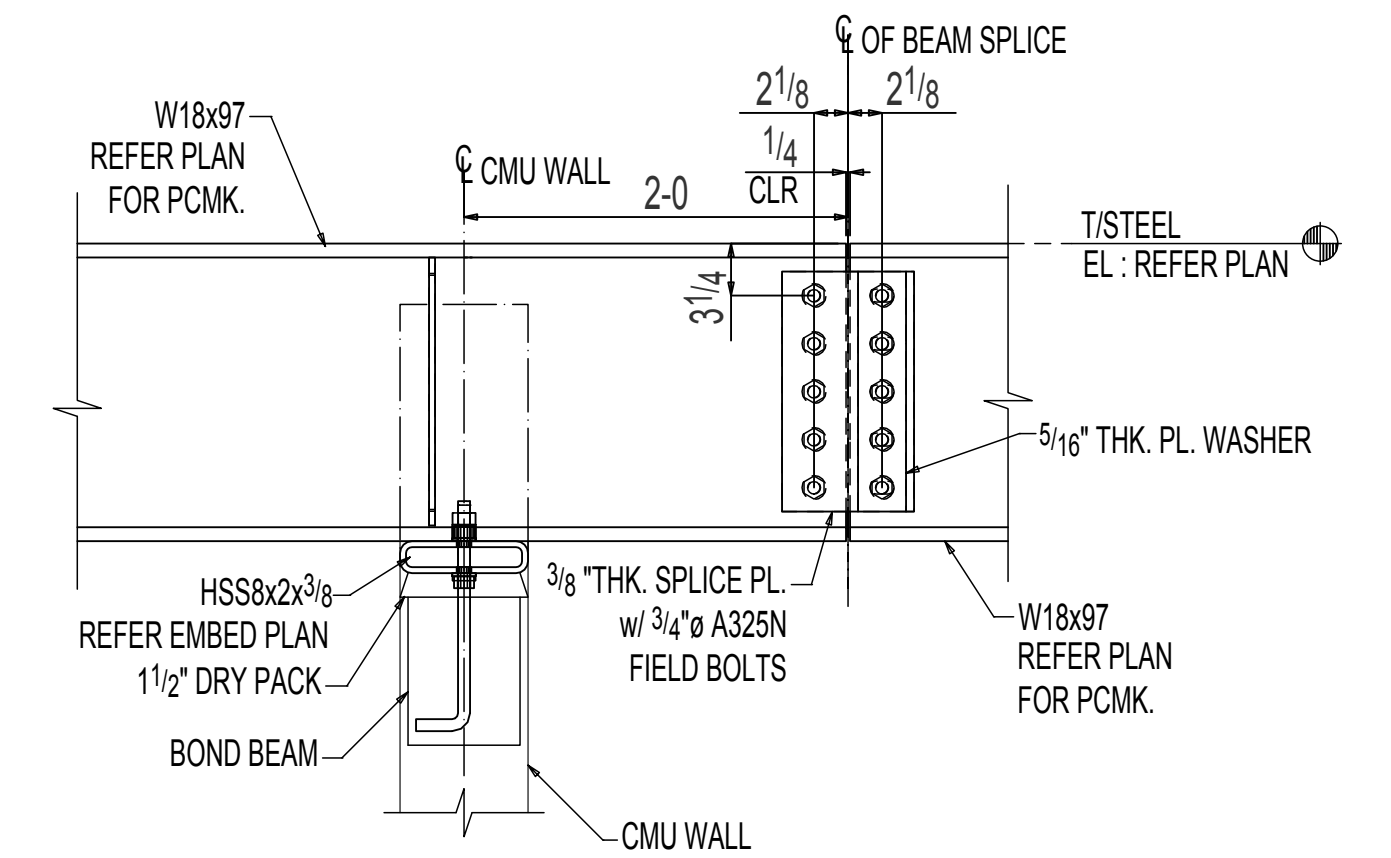
**2 SECTION VIEW**  
**E211** (REF DWG NO : 229/S7.2)



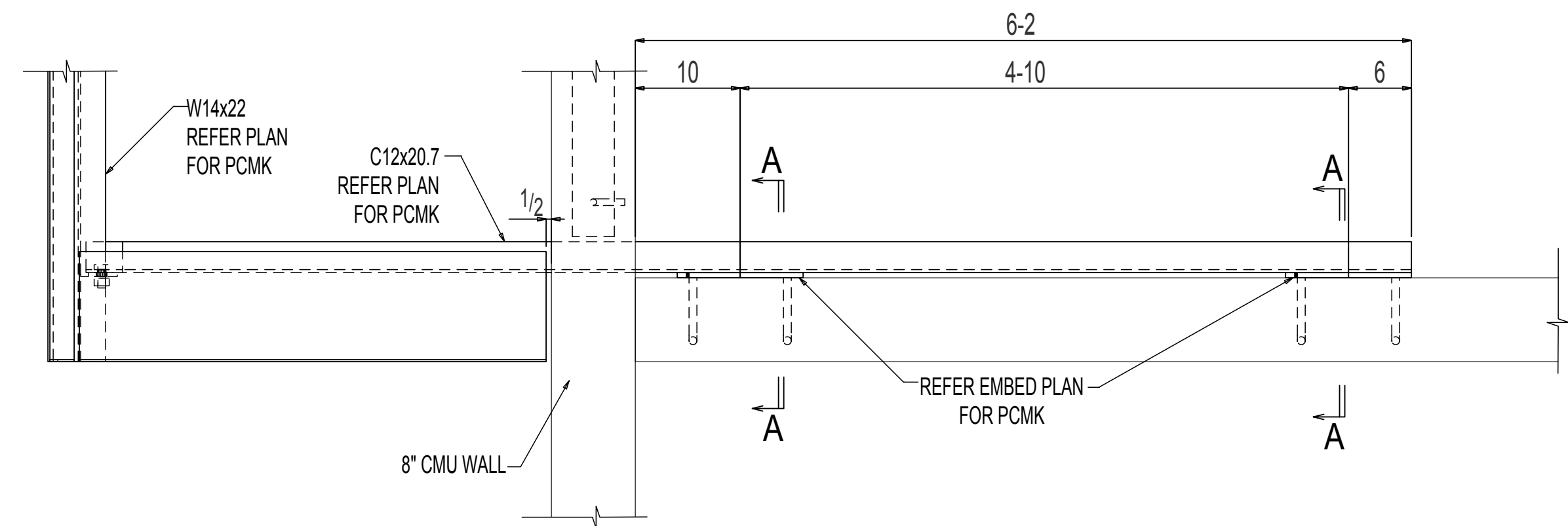
**3 SECTION VIEW**  
**E211** (REF DWG NO : 223/S7.2)



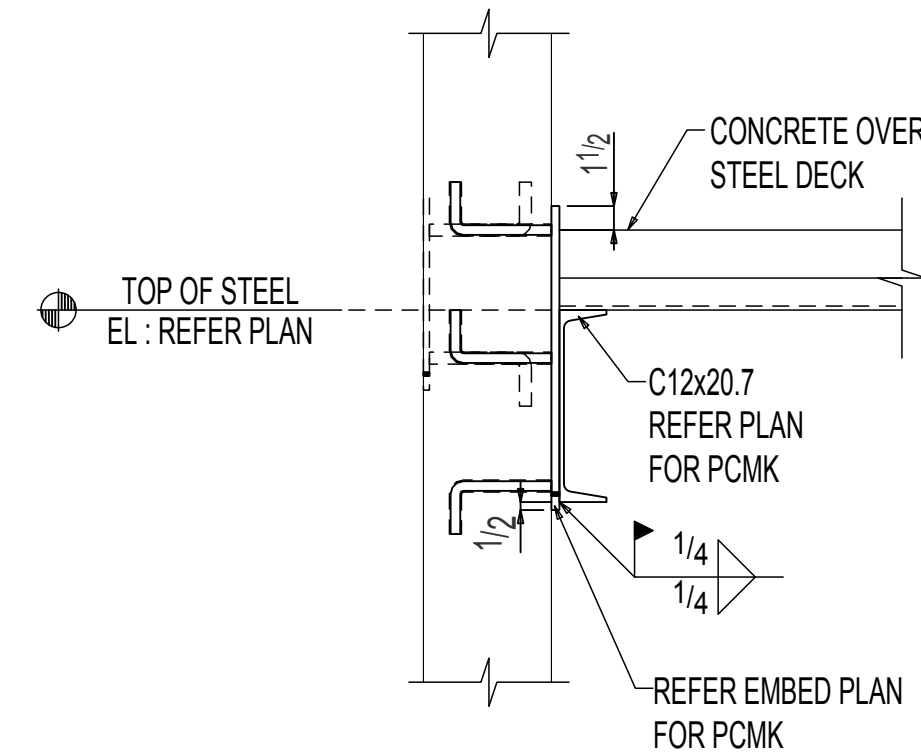
**4 SECTION VIEW**  
**E211** (REF DWG NO : 287/S7.5)



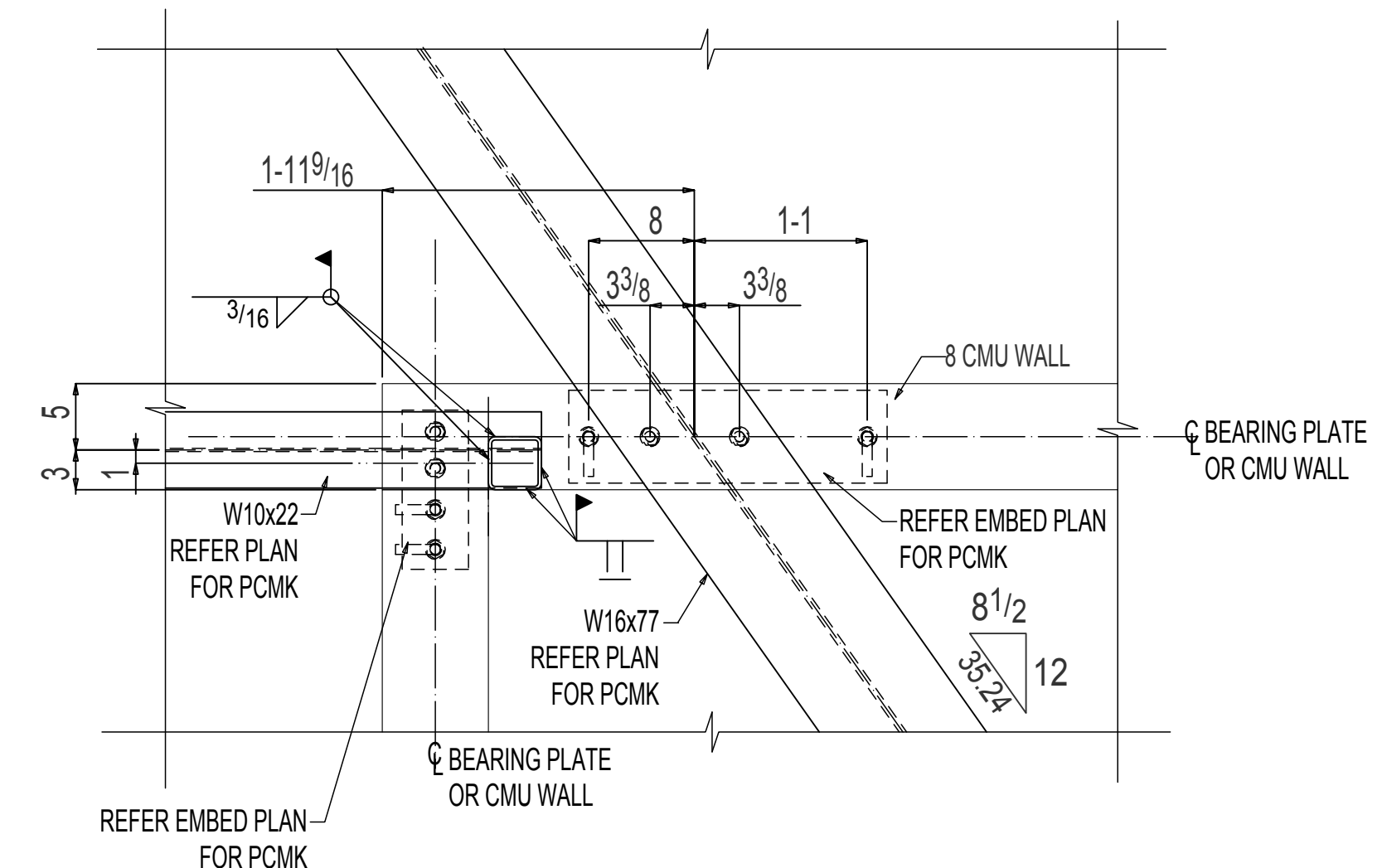
**5 SECTION VIEW**  
**E211** (REF DWG NO : 229/S7.2)



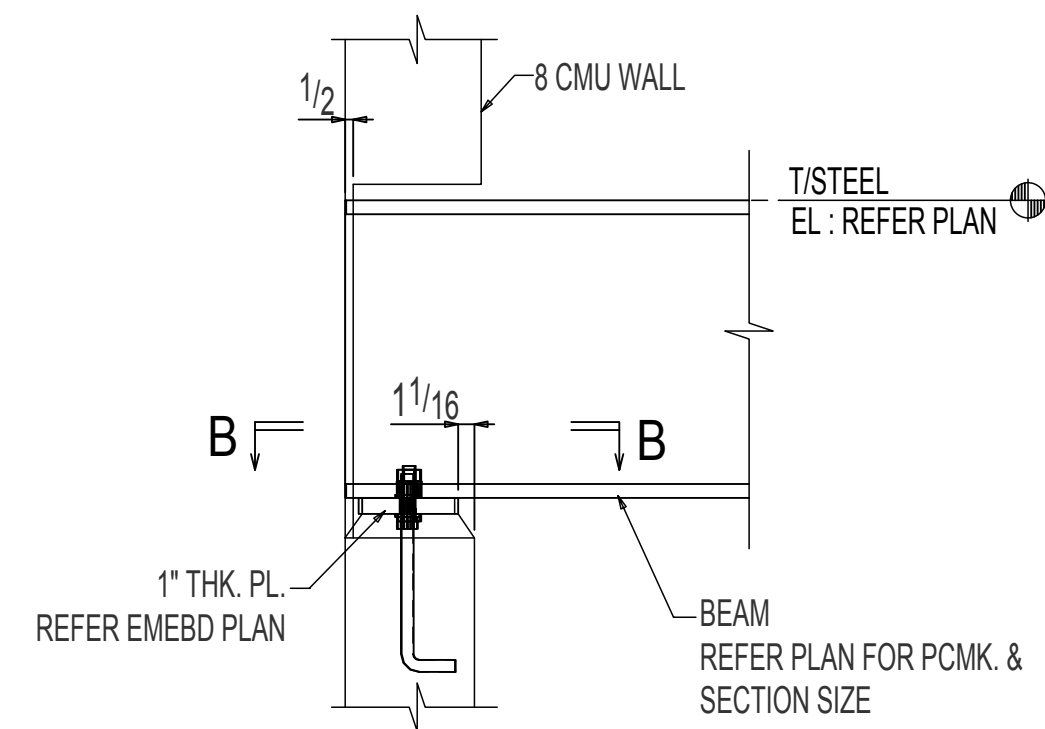
**6 SECTION VIEW**  
**E211** (REF DWG NO : 286/S7.5)



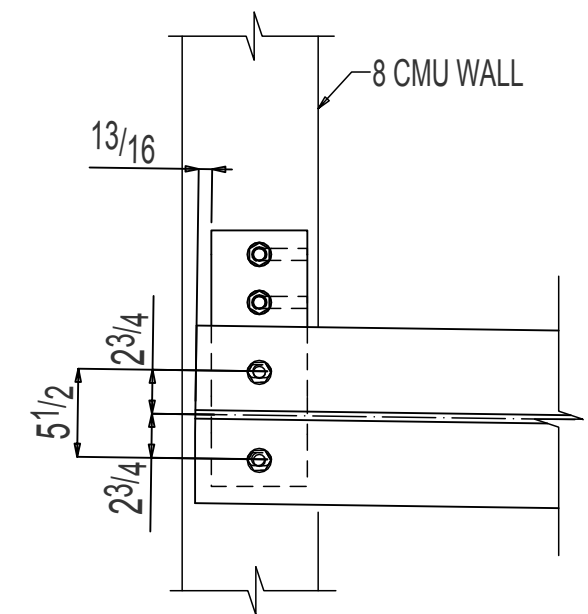
**SECTION VIEW A-A**



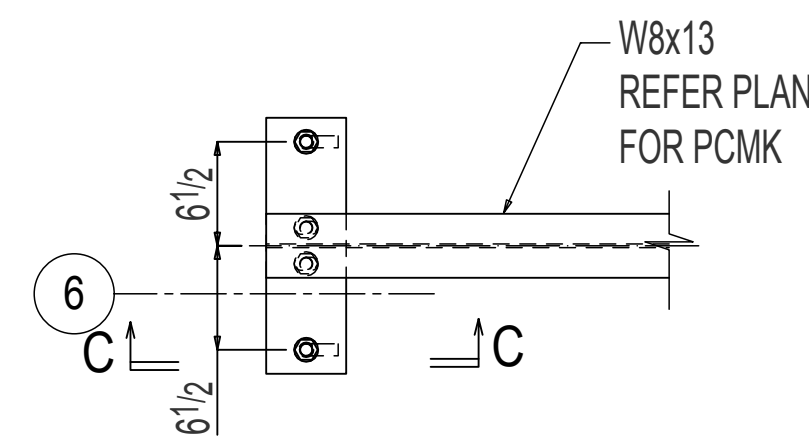
**7 SECTION VIEW**  
**E211** (REF DWG NO : 289/S7.5)



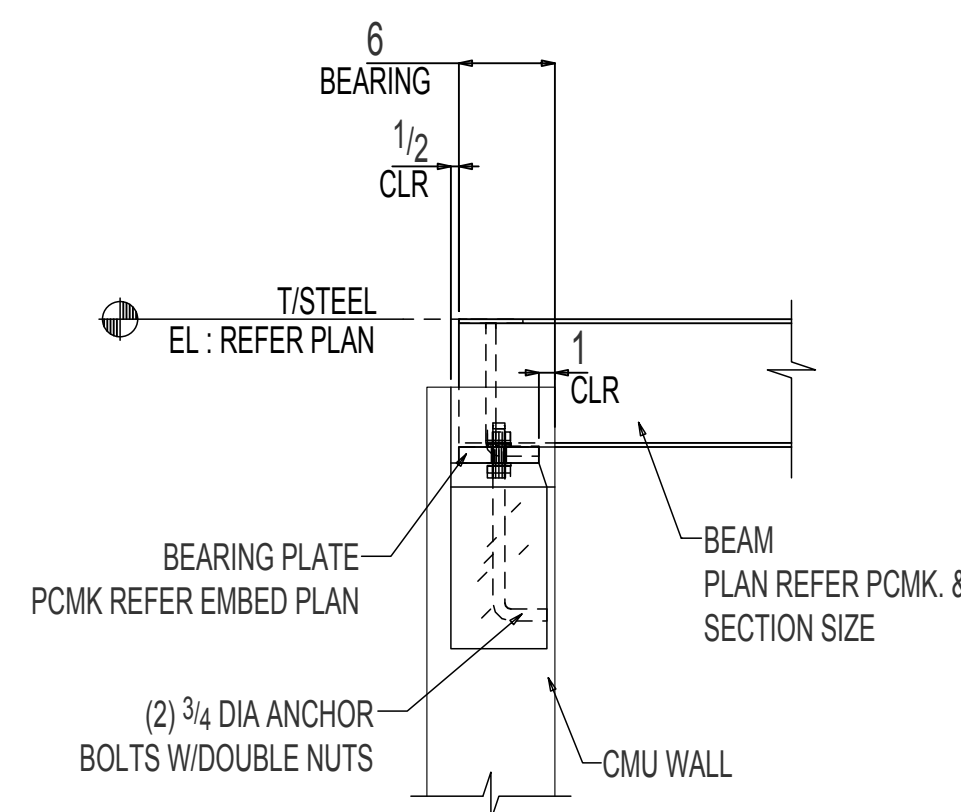
**8 SECTION VIEW**  
**E211** (REF DWG NO : 207/S7.1)



**SECTION VIEW B-B**



**9 SECTION VIEW**  
**E211** (REF DWG NO : 208/S7.1)



**SECTION VIEW C-C**

**NOTICE TO CONTRACTOR & ERECTOR:**  
IF ANY CORRECTIVE WORK OR REPLACEMENT MATERIAL IS BELEIVED NECESSARY, THE STEEL FABRICATOR SHALL BE IMMEDIATELY ADVISED AND HIS AUTORIZATION OBTAINED BEFORE ANY SUCH ACTION IS TAKEN.